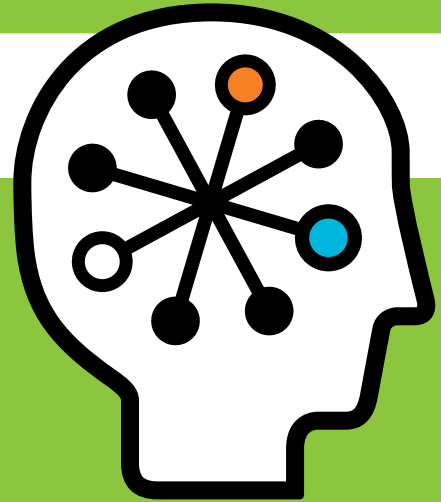




HP ProLiant DL180 G6 Server

Data sheet



Combining storage density, expandability, and energy efficiency, the new HP ProLiant DL180 G6 Server gives you an extremely flexible computing platform with powerful compute technology and ample I/O and storage.

With the HP ProLiant DL180 G6 Server, you will find a cost-effective, general purpose rack server that effectively meets the needs of growing businesses and corporate scale-out. The HP ProLiant DL180 G6 Server is a powerful dual-processor capable server that delivers power efficiency and essential features for 32-bit and 64-bit applications. Developed to address the needs of small and medium enterprises, the DL180 G6 offers the efficiencies of a rack server while maintaining the economics of a tower server.

The G6 has an array of new features and innovations that set it apart from previous generations and the competition. The DL180 G6 features the latest Intel® Xeon® processors, increased dual in-line memory module (DIMM) slot count, small form factor (SFF) drives, 28 TB internal storage capacity, and efficient memory and power supplies.

The HP DL180 G6 is a flexible space-saving solution, combining the benefits of a compute node with those of a storage server. Moreover, with improved features providing enhanced reliability, simplified maintenance, and lower total cost of ownership (TCO), it can help you handle complex business requirements with ease.

Key features and benefits

High performance

The HP DL180 G6 gives you the performance advantages of dual and quad core architecture along with the following new features:

- Up to two (2) Quad-Core or Six-Core Intel® Xeon® 5500 and 5600 series processors give you the compute power you need for heavy workloads

- Up to 192 GB of PC3-8500 (1066 MHz) DDR3 memory allows you to benefit from fast speeds and increased bandwidth
- Four (4) internal PCI Express slots (3x8 full-length/full-height and 1x16 low-profile/half-height) provide flexible connectivity options
- Up to 28 TB internal storage provides the capacity you need
- Support for up to 14 large form factor (LFF) or 25 small form factor (SFF) drives gives you flexibility of choice
- Smart Array support facilitates increased I/O performance and optional RAID 5 data protection

Simplified management and deployment

The HP DL180 G6 has added capabilities that reduce unplanned downtime as well as setup and update time. In addition, it delivers standards-based control from any location, anytime. Key highlights include:

- ProLiant Onboard Administrator powered by Lights Out 100i enables standards-based, remote management
- Intelligent Platform Management Interface (IPMI) 2.0 standard and System Management Architecture for Server Hardware Command Line Protocol (SMASH CLP) allow you to standardize commands for remote management
- LO100i Advanced (available w/license activated keys) provides virtual KVM and virtual media support
- Addition of the Easy Setup CD facilitates rapid and simplified deployment with SmartStart Scripting Toolkit (SSSTK), HP Smart Update Manager (HP SUM), and Smart Components
- New Simple Network Management Protocol (SNMP) agents provide SIM management (health and performance monitoring, alerting, and system control) which helps reduce unplanned downtime

In addition, the DL180 G6 supports HP Insight Control suite for Linux (ICE-Linux), which enables comprehensive monitoring and management of Linux-based ProLiant server platforms.

Right-sized solution

The HP DL180 G6 provides expandable performance and is designed to enhance processing throughput and dependability at a low cost. Options include:

- Choice of the latest quad-core Intel Xeon processors provides the processing power to run multiple tasks and applications simultaneously
- PC3-10600 DDR3 Registered or Unregistered DIMMs provide cost and power flexibility at a component level

- PCI Riser options give you the ability to replace two x8 slots with one x16 slot
- Four-drive LFF models can be expanded with eight drives option kit

Ease of Ownership

The HP ProLiant DL180 G6 delivers performance and value while being very easy to own.

- Optional high-efficiency power supplies and low-voltage CPUs help achieve lower total cost of ownership
- Industry-standard management tools from your choice of leading operating system vendors make the DL180 G6 easy to set up, maintain, and troubleshoot
- Tool-less rail kits save time during rack installation
- Dense 2U rack design and efficient power supply choices facilitate increased usage of server rack and data center space
- Rack-optimized, 2U form factor allows fast deployment and efficient maintenance of large-scale cluster solutions
- Easy-access chassis and internal component labels enable fast and simple maintenance and expansion

Enhanced reliability

- Embedded HP NC362i dual-port 1 Gb NIC features load-balancing, failover, and sideband support—reducing network latency
- Support for up to two (2) redundant hot plug power supplies helps keep environments up and running
- Internal USB option provides additional connectivity and security
- Trusted Platform Module (TPM) option facilitates enhanced data protection

Energy Efficiency Leadership

The HP DL180 G6 comes with new features and components that reduce power consumption without affecting performance. This is ideal for energy-conscious customers. With a family of high-efficiency power supplies, you can lower your power consumption and make sure that you do not oversubscribe your power requirements. With the DL180 G6, you can:

- Reclaim lost data center power with right-sized ProLiant power supplies that enable you to meet your exact needs
- Choose from 460W, 750W power supplies that are up to 94 percent efficient
- Benefit from common power slots that significantly reduce the spares needed
- Rely on efficient choices at the component level—power supplies, low-power processors and memory, voltage regulators—to conserve energy



Processor and memory

Processor Type	Intel® Xeon® 5500 and 5600 series
Available Processors	Six-Core Intel Xeon Processor X5650 (2.66 GHz, 95W) Six-Core Intel Xeon Processor X5660 (2.80 GHz, 95W) Six-Core Intel Xeon Processor X5670 (2.93 GHz, 95W) Six-Core Intel Xeon Processor L5640 (2.26 GHz, 60W) Quad-Core Intel Xeon Processor E5640 (2.66 GHz, 80W) Quad-Core Intel Xeon Processor E5630 (2.53 GHz, 80W) Quad-Core Intel Xeon Processor E5620 (2.40 GHz, 80W) Quad-Core Intel Xeon Processor L5630 (2.13 GHz, 40W) Quad-Core Intel Xeon Processor E5540 (2.53 GHz, 80W) Quad-Core Intel Xeon Processor E5520 (2.26 GHz, 80W) Quad-Core Intel Xeon Processor E5506 (2.13 GHz, 80W) Quad-Core Intel Xeon Processor E5504 (2.00 GHz, 80W) Quad-Core Intel Xeon Processor L5630 (2.13 GHz, 40W) Quad-Core Intel Xeon Processor L5520 (2.26 GHz, 60W) Dual-Core Intel Xeon Processor E5503 (2.0 GHz, DC)
Processor Core	6, 4, or 2
Processor Cache	12 MB, 8 MB, or 4 MB Level 3 cache
Max Processor Speed	2.93 GHz
Multi-processor	2
Maximum Front Side Bus Speed	1333 MHz
Memory Type	PC3-10600E DDR3 1067 PC3-8500 DDR3 1066
Standard Memory	4 GB, 8 GB, or 16 GB depending on model
Max Memory	192 GB using 16 GB DIMMs
Memory slots	12 DIMM
Advanced Memory Protection	Advanced ECC
Storage Type	Hot Plug 3.5-inch SAS Hot Plug 3.5-inch SATA Hot Plug 2.5-inch SAS Hot Plug 2.5-inch SATA Hot Plug SATA Midline SSD
Max number of hard drives	25 Note: Up to 14 hot plug LFF SAS 7.2K rpm 2 TB and 15K 1 TB and 300/147/72 GB Up to 14 hot plug LFF SATA 7.2K rpm 1 TB and 750/500/250/160 GB Up to 25 hot plug SFF SAS 15K rpm 146/72 GB, 10K rpm 600/300/146, 7.2K rpm 500 GB Up to 25 Hot plug SFF SATA 7.2K rpm 500/160 GB
Removable Media Bays	1
Expansion Slot	4 total, 3 or 4 available depending on model
Storage Controller	HP Smart Array P212, HP Smart Array P410, or HP Smart Array B110i SATA RAID Controller on standard models; optional Smart Array controllers
Deployment	
Form Factor	Rack
Rack Height	2U
Networking	Embedded HP NC362i Integrated Dual Port Gigabit Server Adapter
Infrastructure Management	ProLiant Onboard Administrator powered by Lights-Out 100i
Redundant Power Supply	1 built-in power supply (optional redundant power supply)
Redundant Fans	Optional
Warranty	3-year parts

Dependability and support

Thriving businesses know that technology deployed and supported properly can offer a competitive advantage. So when it comes to expert, dependable support, HP can help you in more ways than one.

- Global server support network to assist you with set-up, installation, and to provide reliable after sales support when you need it from a single point of contact.
- HP provides a broad range of pre-configured, factory-integrated, and tested cluster packages ideal for mid-range technical computing.

Ideal environment

The HP ProLiant DL180 G6 Server provides ultimate flexibility and capacity for small and mid-sized businesses as well as scale-out computing.

Small and mid-size businesses

- Performance in a cost-effective solution can meet small and mid-size business budget needs.
- Quad-Core Intel® Xeon® processors and DDR3 memory options allow for fast throughput on most applications.

Network service providers

- Large capacity and low-cost drive options make the DL180 G6 ideal for gaming, mail and messaging; Web search; 1 GB mailboxes; video storage and streaming; file/print; and photo applications.
- Rack-optimized, 2U form factor enables fast deployment and efficient maintenance of large-scale cluster solutions.

HP Financial Services

HP Financial Services provides innovative financing and financial asset management programs to help you cost-effectively acquire, manage, and ultimately retire your HP solutions. For more information on these services, contact your local HP representative, or visit www.hp.com/go/hpfinancialservices

HP Services

When technology works, business works.

The challenge of virtually every IT organization is similar: to develop and maintain an agile, efficient server infrastructure that delivers the service levels your business needs.

HP Technology Services offer a comprehensive portfolio of HP Care Pack Services to help design, deploy, manage, and support your IT environment, enabling cost-effective upgrades to standard warranty with easy-to-buy, easy-to-use support packages.

Minimum recommended HP Care Pack offerings

- Three-year, next business day response onsite nine-hour x five-day coverage, hardware support
- Hardware Installation only

Enhanced service level Care Pack offerings

- Three-year same business day four hour response onsite 13-hour x five-day coverage, hardware support
- Hardware Installation plus operating system installation and startup

Benefit from HP Care Pack Services helping you:

- Reduce deployment time and manage ProLiant server solutions smoothly and efficiently
- Increase uptime and performance of server availability to your business
- Detect, diagnose, and repair problems quickly to save time, money, and resources

For more information, visit

www.hp.com/services/proliantservices or
www.hp.com/go/proliant/carepack

For more information

For more information on the HP ProLiant DL180 G6 Server, contact your local HP representative or visit www.hp.com/servers/proliantdl180

Technology for better business outcomes

To learn more, visit www.hp.com/servers/proliantdl180

© Copyright 2009–2010 Hewlett-Packard Development Company, L.P. The information contained herein is subject to change without notice. The only warranties for HP products and services are set forth in the express warranty statements accompanying such products and services. Nothing herein should be construed as constituting an additional warranty. HP shall not be liable for technical or editorial errors or omissions contained herein.

Intel and Xeon are trademarks of Intel Corporation in the U.S. and other countries.

4AA2-5057ENW Rev. 2, February 2010



Get connected

www.hp.com/go/getconnected

Current HP drivers, support & security alerts delivered directly to your desktop

