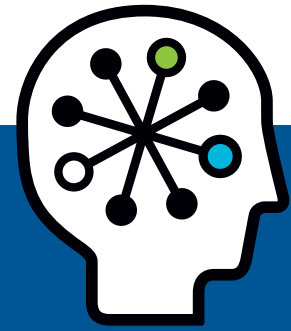




# HP ProLiant Systems and Symantec Brightmail Gateway Virtual Edition

## Technical Addendum



### Executive summary

HP Technical Consultants with the assistance of Symantec Technical Consultants recently performed a series of tests to determine the number of e-mail users that can be supported using various HP ProLiant configurations running Symantec Brightmail Gateway Virtual Edition. It is the purpose of this technical addendum to explain the results of those tests and to provide reference architectures for customers considering deploying Symantec Brightmail Gateway Virtual Edition on HP servers.

HP and Symantec recommend that customers work with System Engineers to incorporate other factors present in a production environment that influence sizing (actual e-mail workload, message size, feature choices, such as quarantine and extended reporting usage, etc).

**Target audience:** The target audience for this technical addendum is the IT community evaluating a deployment of Symantec Brightmail Gateway Virtual Edition.

This technical addendum describes testing performed in June 2008.

### Solution definition

Symantec Brightmail Gateway Virtual Edition is made up of two components, the Control Center and the Scanner.

The Control Center allows you to configure and manage e-mail filtering, SMTP routing, system settings and all other functions. The Control Center provides information on the status of all Symantec Brightmail Gateway Virtual Edition hosts in your system, including system logs and extensive customizable reports. The Control Center also hosts the spam and suspect virus quarantines.

The Scanner filters e-mail for viruses, spam, noncompliant messages and checks e-mail against allowed sender and blocked sender lists. Scanners can also filter for spam and scan IM file transfers for viruses.

### Sizing considerations and assumptions

- Using the medium configurations HP was able to process 14 inbound transactions and 24 outbound transactions per second. This translates into being able to satisfy the needs of 1000+ e-mail users.
- Using the large configuration HP was able to process 25 inbound transactions and 44 outbound transactions per second. This translates into being able to satisfy the needs of up to 150,000 e-mail users.
- Customers should expect to utilize ESX Server for their production environments.
- VMware Server may be used for test and development because of pricing considerations, however performance when using VMware Server was less than what was attained using ESX Server.

### Symantec licensing provisions

Symantec Brightmail Gateway Virtual Edition is licensed on a per-user/per-year subscription model. Customers purchase a subscription based on the relevant buying program, the number of employees they want to protect and the number of years they would like to be protected. Discounts are offered for periods in excess of one year.

#### Steps for ordering

1. Select the hardware – Customers purchase the HP hardware they need. The hardware purchase comes with a three-year warranty for next-business-day on-site repair for all but the DL140 G3 which comes with a one year on-site repair.
2. Select subscription – The subscription cost includes software, upgrades, 24x7 filter updates (content), and basic or essential support. After purchasing a subscription the customer receives the necessary license files to activate the filtering services.



# Reference configurations

## Hardware includes:

### Medium configuration utilizing HP BladeSystems

- 1 – 437502-B21 – HP c3000 BladeSystems Enclosure
- 4 – 416656-B21 – BL460c G1 5160 3.0Ghz Xeon Blades
- 4 – 397411-B21 – 2GB FBD PC2-5300 2X1GB Memory
- 4 – 416660-B21 – HP X5160 BL460c G1 additional 3.0Ghz 1 processor/Dual-Core
- 8 – 418367-B21 – 146GB 10K SAS Dual Ported Hard disk
- 2 – 437572-B21 – 1200W 12V Hot plug AC Power Supply
- 2 – 252663-D73 – 40amp attached cord high volt NA PDU

### Medium configuration utilizing HP ProLiant servers

- 4 – 417755-001 – DL140 G3 5160 3.0Ghz 1 processor/Dual-Core ProLiant system
- 4 – 417786-B21 – DL140 G3 additional 3.0Ghz additional 1 processor/2 core
- 8 – 397411-B21 – 2GB FBD PC2-5300 2X1GB Memory
- 8 – 384854-B21 – 146B 15K RPM Dual Ported Hard Disk
- 1 – 252663-B24 – 16A High Voltage PDU
- 1 – 340653-001 – 20A Power Cord

### Large configuration utilizing HP ProLiant servers

- 4 – 456830-001 – DL180 G5 ES420 2.5Ghz 1 processor/Quad-Core HP ProLiant system
- 4 – 458785-B21 – ES420 2.5Ghz additional 1 processor/Quad-Core
- 8 – 408851-B21 – 2GB FBD PC2-5300 2X1GB Memory
- 24 – 416127-B21 – 300GB Dual Ported Hard Disk
- 4 – 411508-B21 HP Smart Array E200/128MB Controller
- 1 – 252663-B24 – 16A High Voltage PDU
- 1 – 340653-001 – 20A Power Cord

## Software includes:

- Symantec Brightmail Gateway Virtual Edition
- VMware ESX Server 3.0.2 or VMware Server 1.0.4

The Brightmail Gateway has a single all-inclusive license that includes three components.

- Symantec Premium AntiSpam – Offers AntiSpam protection for both e-mail and instant messaging based on the Brightmail AntiSpam engine
  - Symantec AntiVirus – Provides AntiVirus protection for both e-mail and instant messaging based on the Symantec AntiVirus engine with LiveUpdate for new virus definitions on an administrator-configured schedule
  - Symantec Premium Content Control – Delivers dictionaries, rules and templates for content filtering to easily implement protection for regulatory compliance, corporate governance and data loss prevention.
3. Select the user count – Customers purchase subscriptions based on the number of users they want to protect.
  4. Choose the term – Customers purchase subscriptions for 1, 2 or 3 year terms, with discounts applied for terms over one year. By choosing a 2-year or 3-year subscription, customers can save approximately 15% and 30%, respectively off the annual price.
  5. Choose business critical support services (optional) – This option provides 24x7x365 access to Symantec technical support.

## Installation instructions

Symantec Brightmail Gateway Virtual Edition installation instructions can be found at the following location:

[ftp://ftp.symantec.com/public/english\\_us\\_canada/products/symantec\\_mail\\_security/8200\\_8300\\_series/manuals/2007/sms\\_installation\\_guide.pdf](ftp://ftp.symantec.com/public/english_us_canada/products/symantec_mail_security/8200_8300_series/manuals/2007/sms_installation_guide.pdf)

## Important note

While this report demonstrates a sample solution for Symantec Brightmail Gateway Virtual Edition running on HP ProLiant solutions, individual implementation may vary greatly. HP recommends that you start your configuration by getting a sizing that is specific to your environment.

## Technology for better business outcomes

© 2008 Hewlett-Packard Development Company, L.P. The information contained herein is subject to change without notice. The only warranties for HP products and services are set forth in the express warranty statements accompanying such products and services. Nothing herein should be construed as constituting an additional warranty. HP shall not be liable for technical or editorial errors or omissions contained herein.

Intel and Xeon are trademarks of Intel Corporation in the U.S. and other countries.

To learn more, visit [www.hp.com](http://www.hp.com) or [www.symantec.com](http://www.symantec.com)

4AA2-2682ENW, October 2008

